

BROOKLINE  
MUSIC  
SCHOOL  
EST 1924

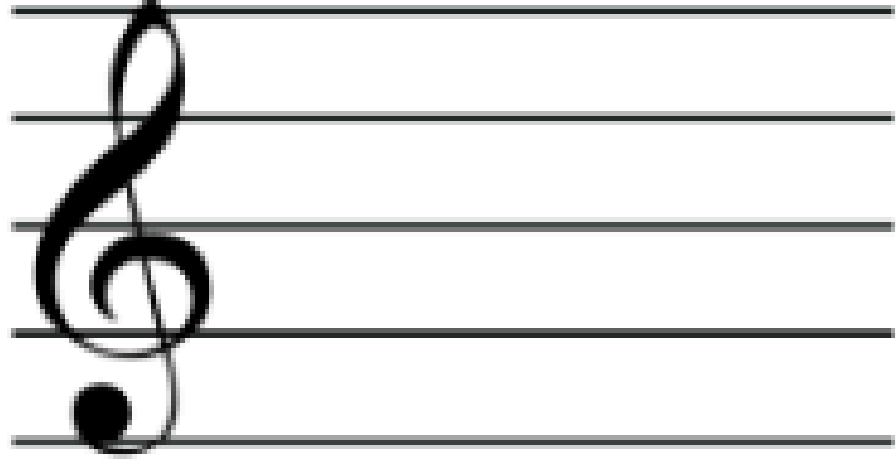
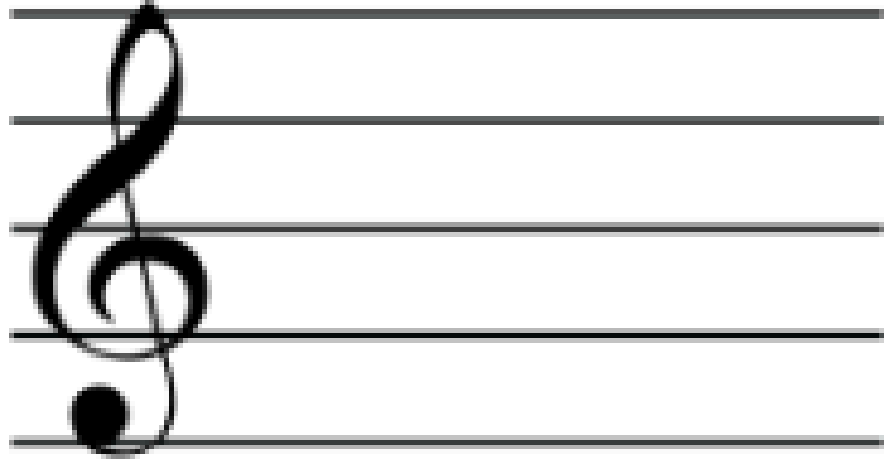
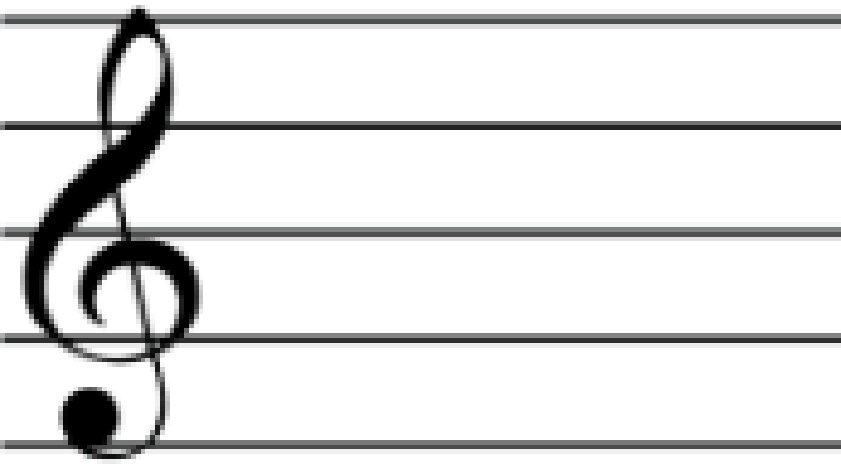
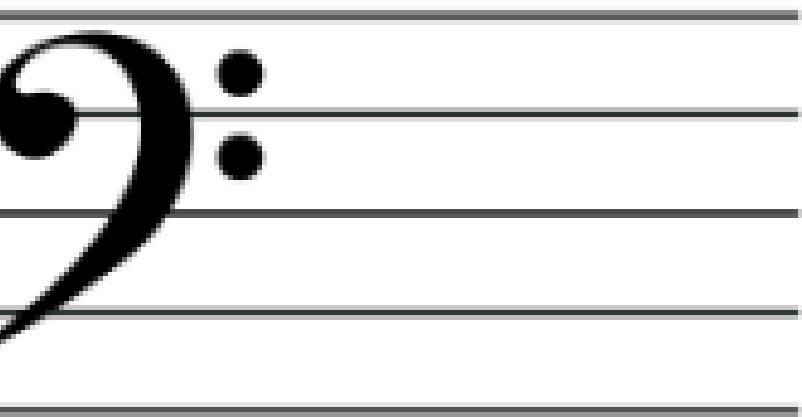
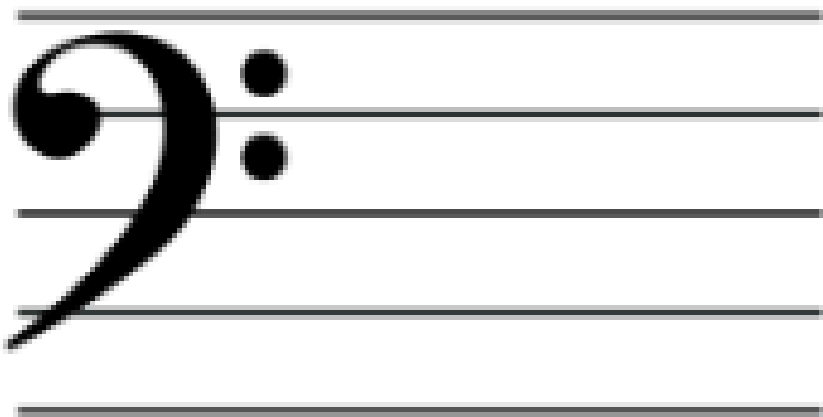
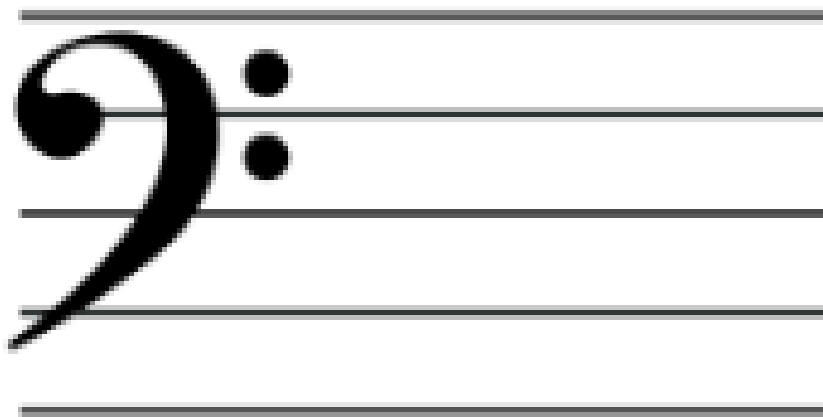
BMS Music Theory Worksheet

Your Name: \_\_\_\_\_

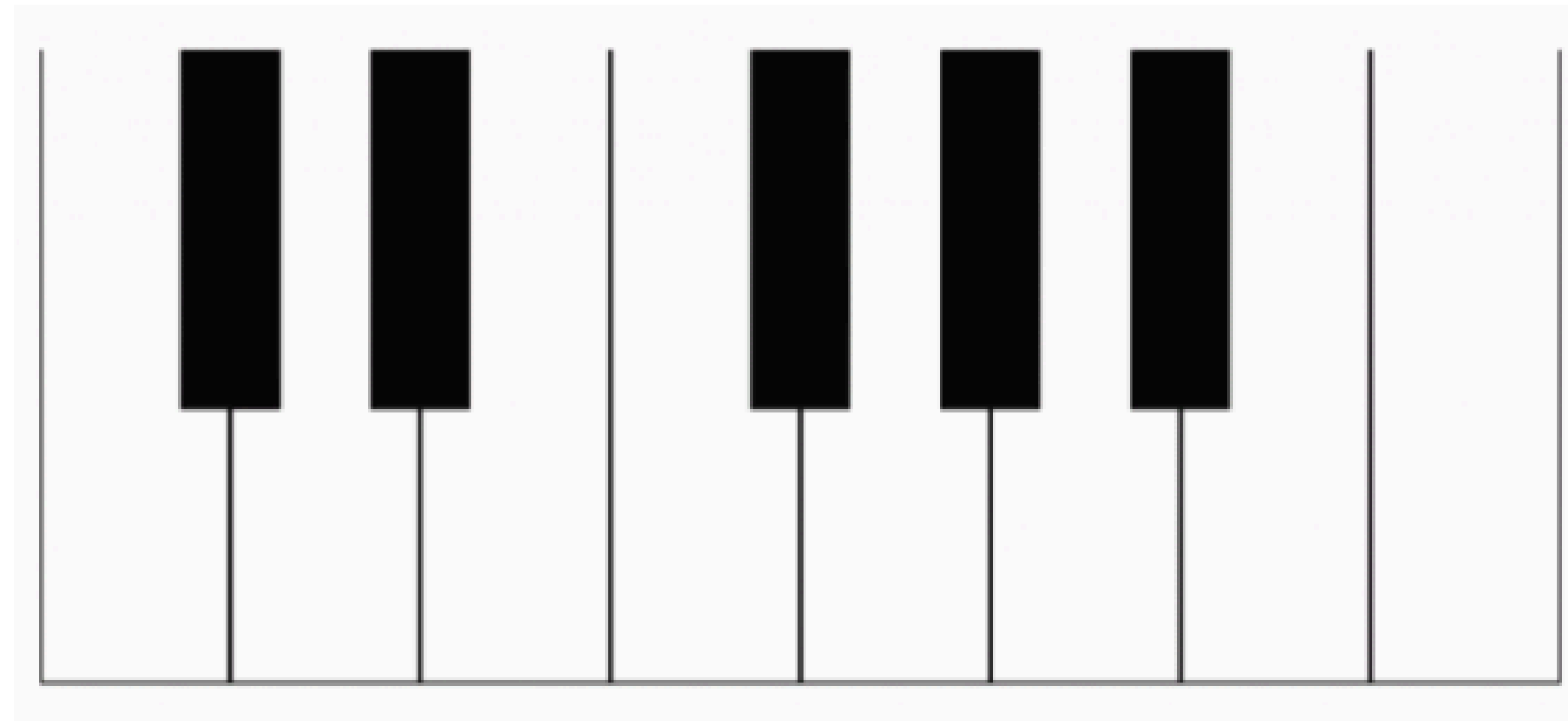
1. Write the names of the notes on the line below each:

				
_____	_____	_____	_____	_____
				
_____	_____	_____	_____	_____

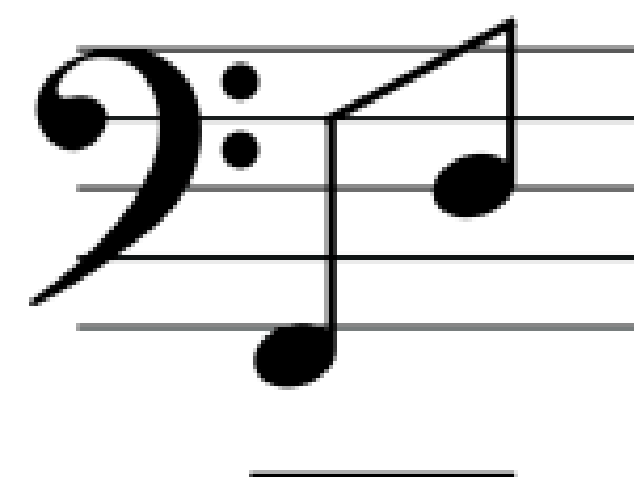
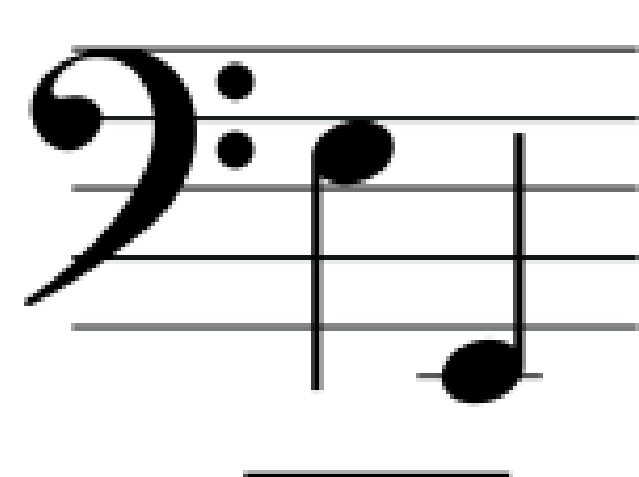
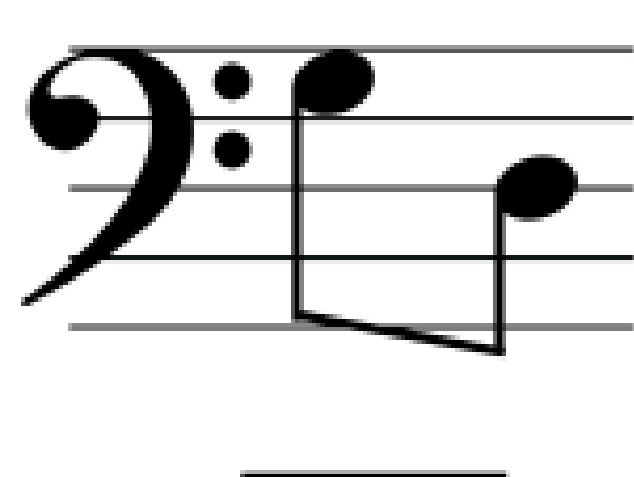
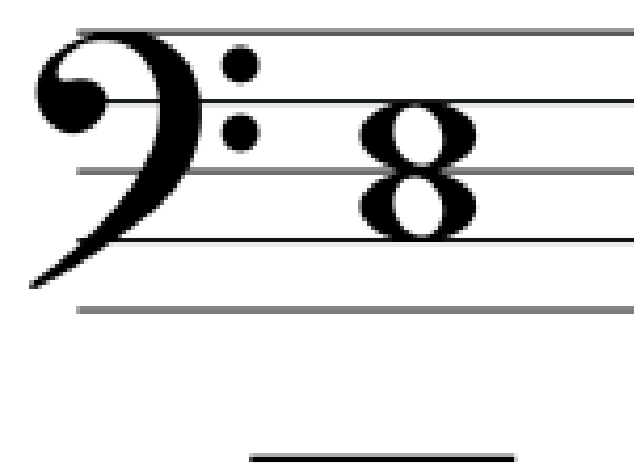
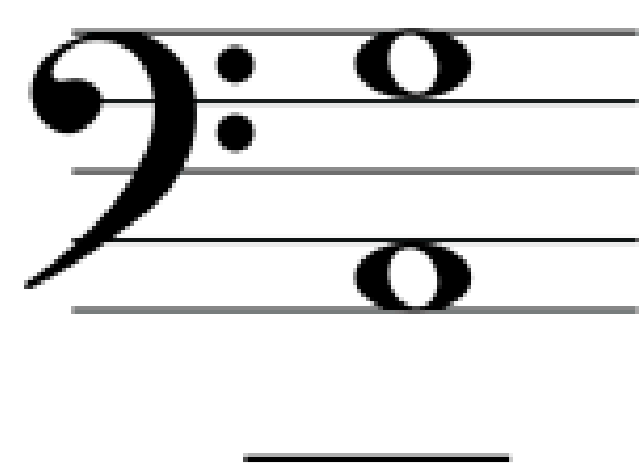
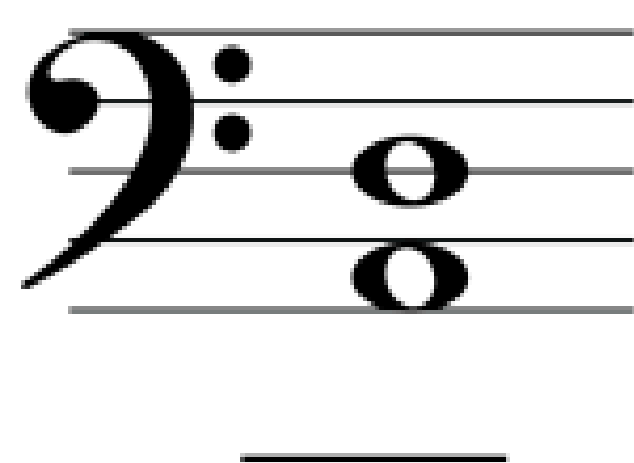
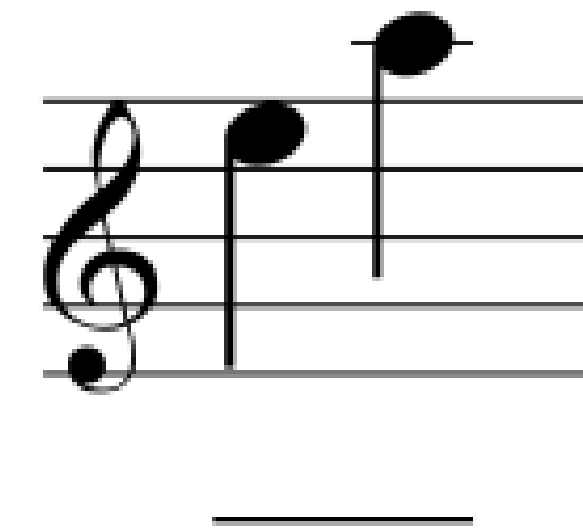
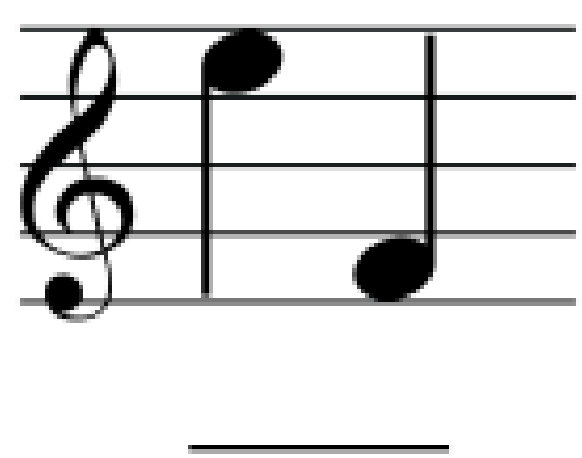
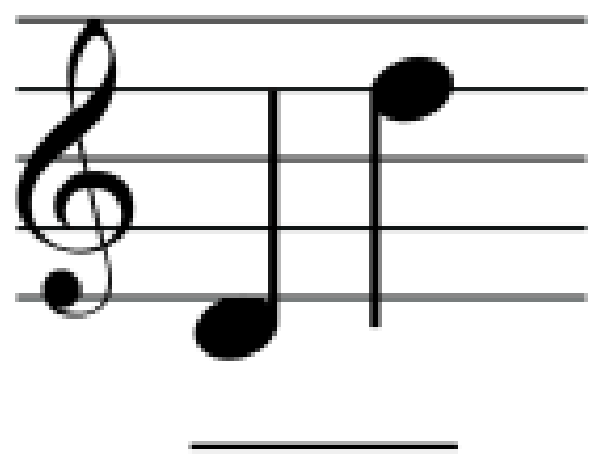
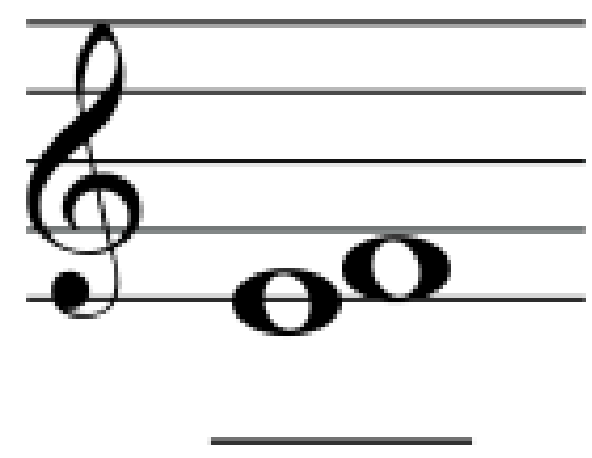
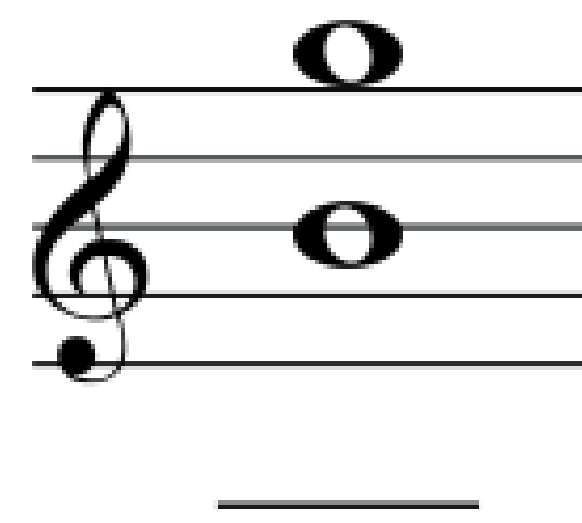
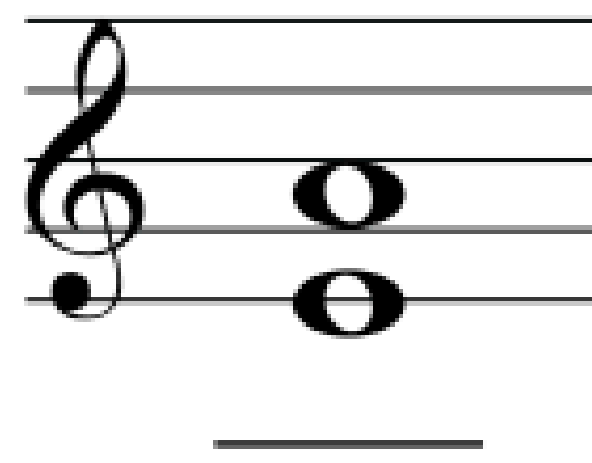
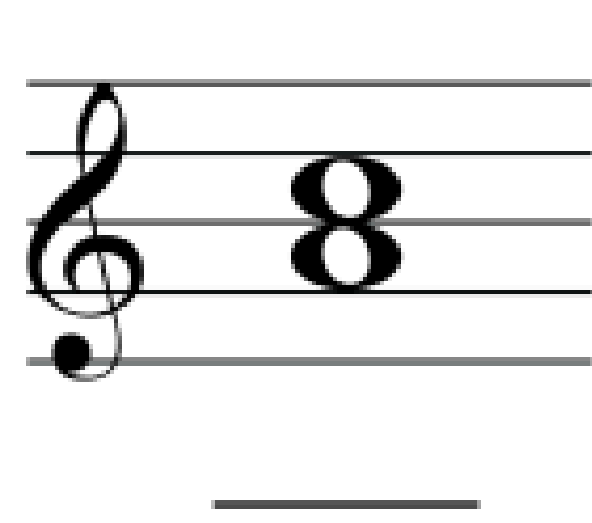
2. Write the following notes on the staff in the requested note value:

		
Whole Note C	Quarter Note A	Half Note E
		
Quarter Note F	Whole Note C	Half Note A

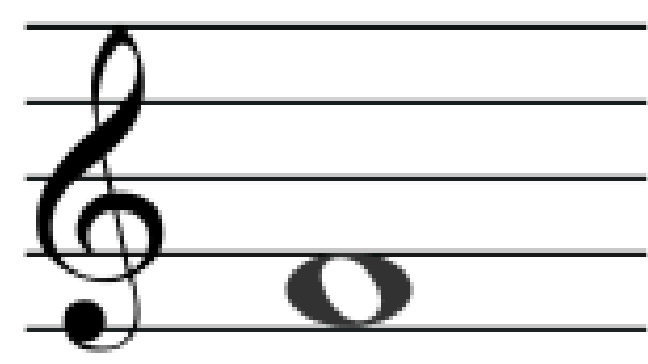
3. Please label all the keys on this keyboard:



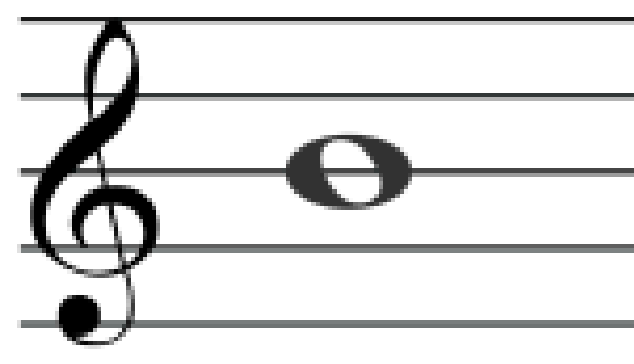
4. Please identify the following intervals on the line under each (e.g. "2nd", "4th", etc.):



5. Please write the following intervals above or below the note provided:



4th above



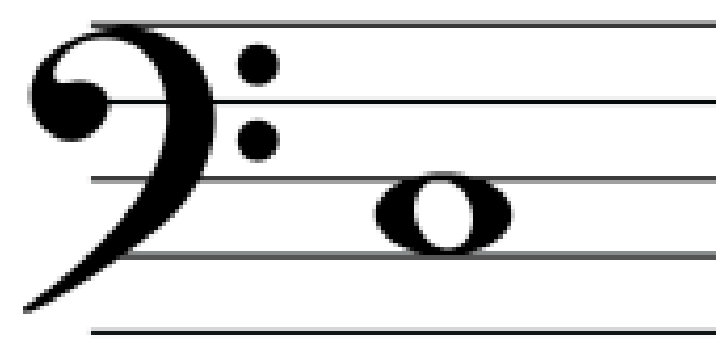
5th below



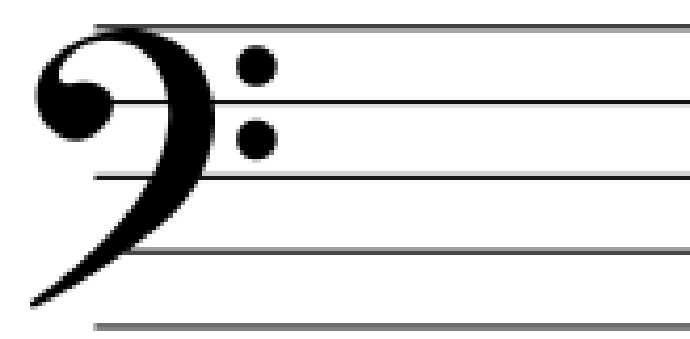
octave above



6th above

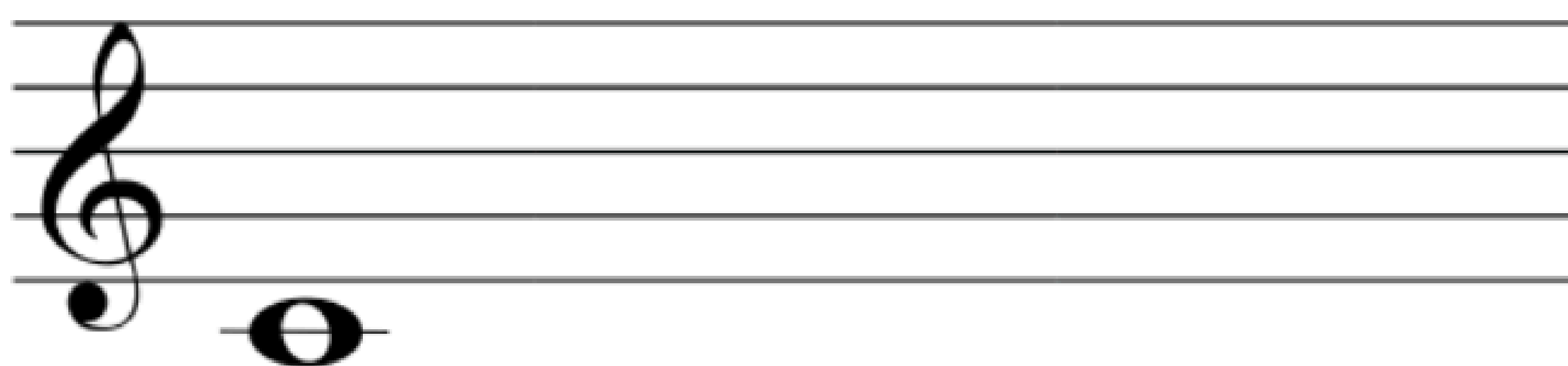


5th below



4th above

6. Please write a major scale beginning on C and circle where the **half steps** are:



7. Draw lines matching the notes pictured with the correct name:



Whole Note

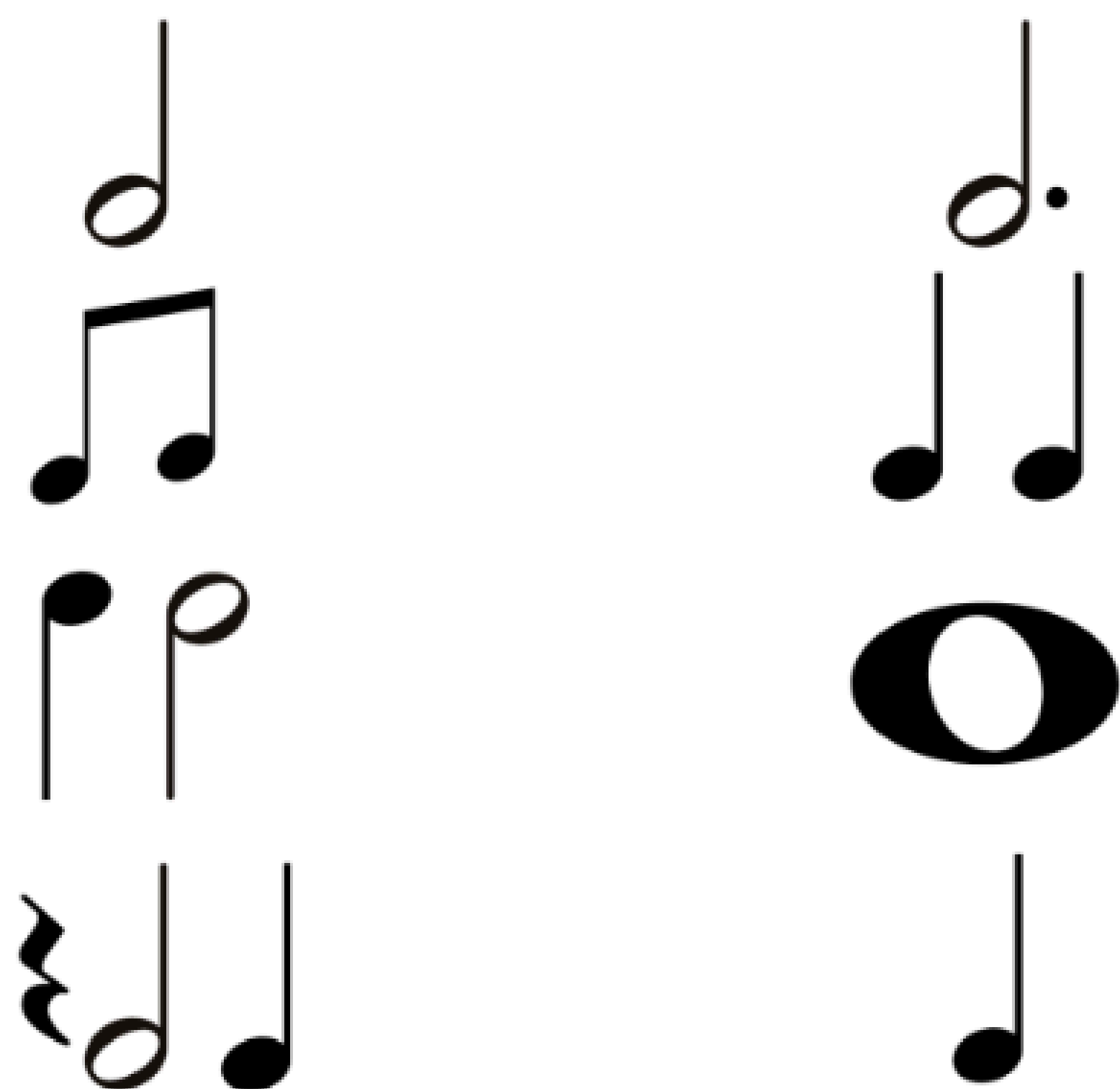
Sixteenth Note

Quarter Note

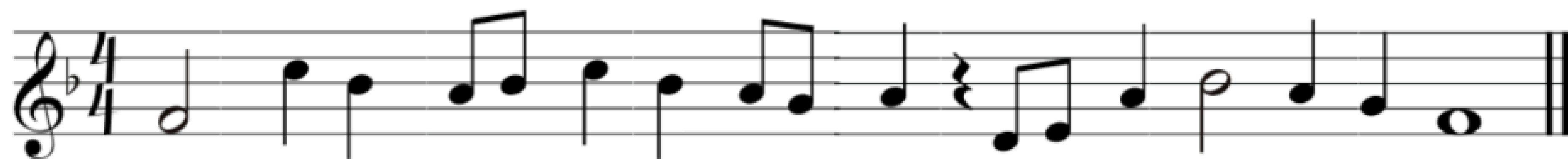
Eighth Note

Half Note

8. Draw lines across matching the examples with the same number of beats in each column:

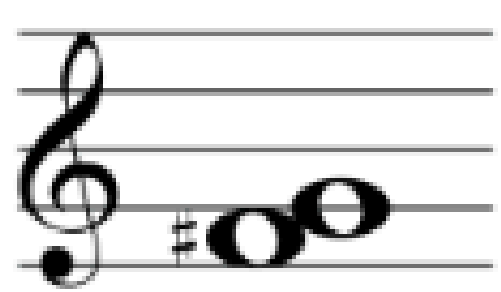


9. These little melodies have lost their bar-lines! Can you draw them?:

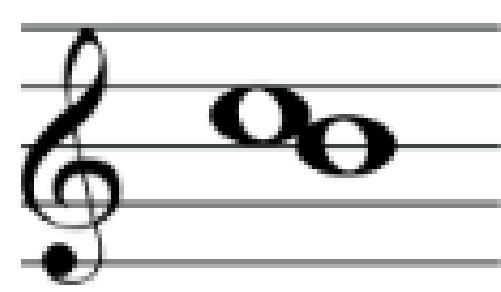


**If you found this worksheet difficult so far, stop here and turn it in to your teacher. If it was easy, keep going as far as you can!**

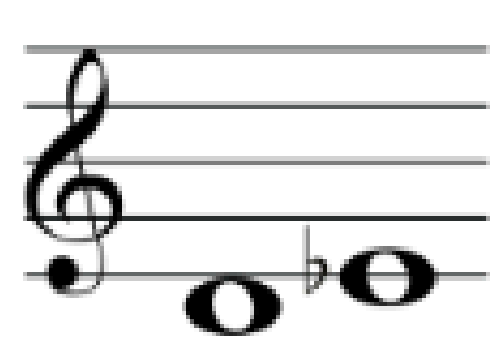
10. Please indicate with "W" or "H" on the lines below whether the following examples are Whole or Half steps:



\_\_\_\_\_



\_\_\_\_\_



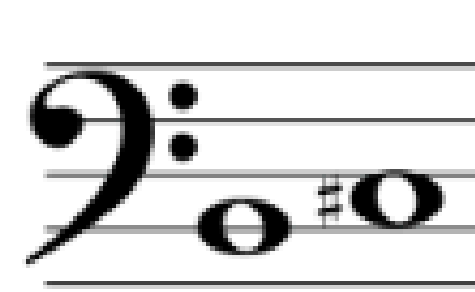
\_\_\_\_\_



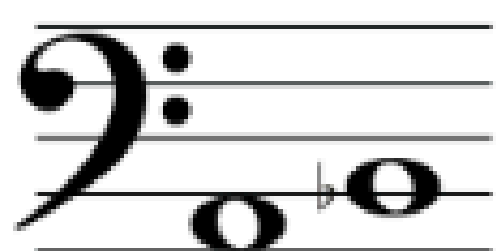
\_\_\_\_\_



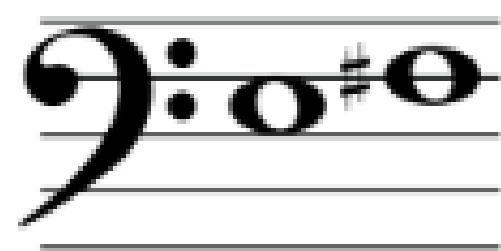
\_\_\_\_\_



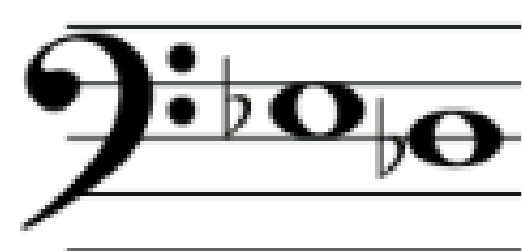
\_\_\_\_\_



\_\_\_\_\_

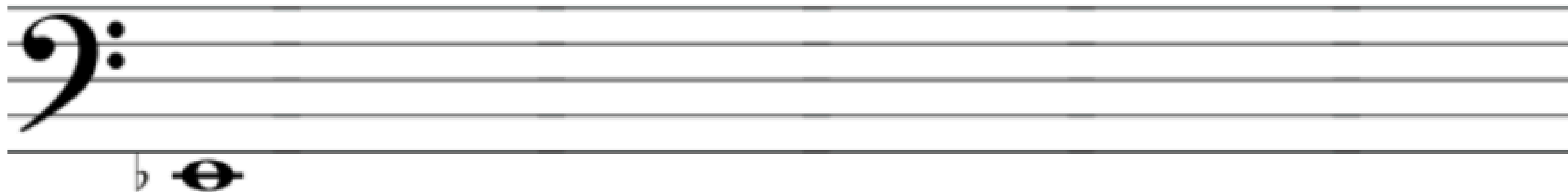
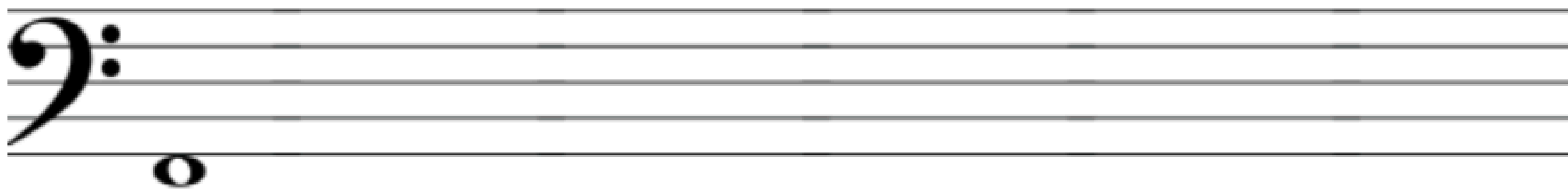
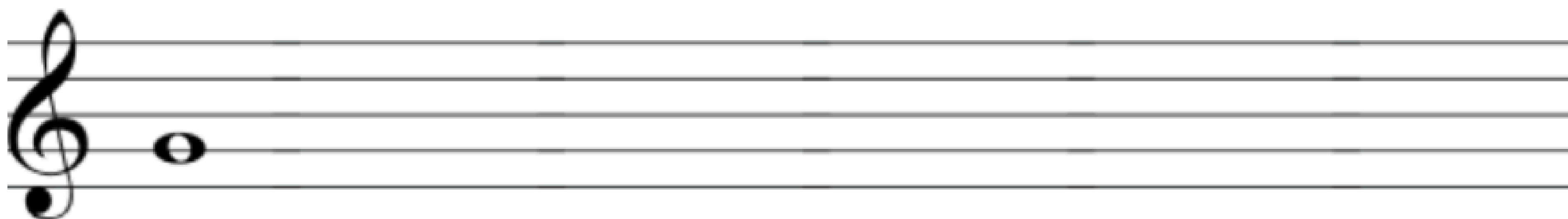
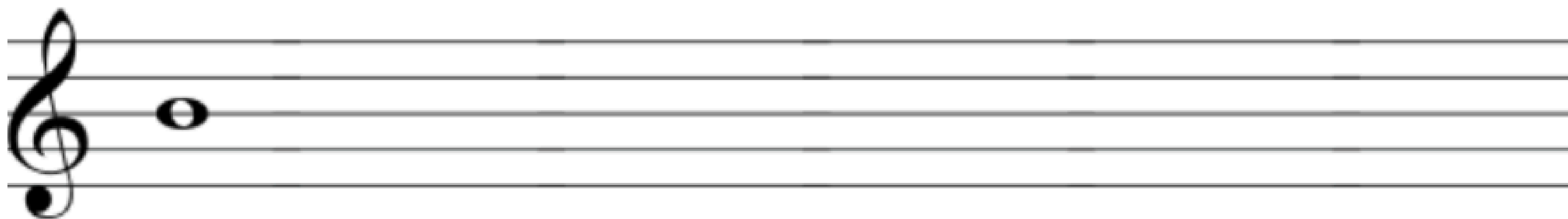


\_\_\_\_\_



\_\_\_\_\_

11. Please write a **Major Scale** starting on each of these notes, including any necessary sharps or flats, and circle the half steps:



12. Please write in the beat numbers and “ands” (e.g. 1 + 2 +) under the corresponding notes or rests:



13. Please draw lines connecting the identical rhythms in each column:



14. Identify the major key for each key signature:

  
\_\_\_\_\_

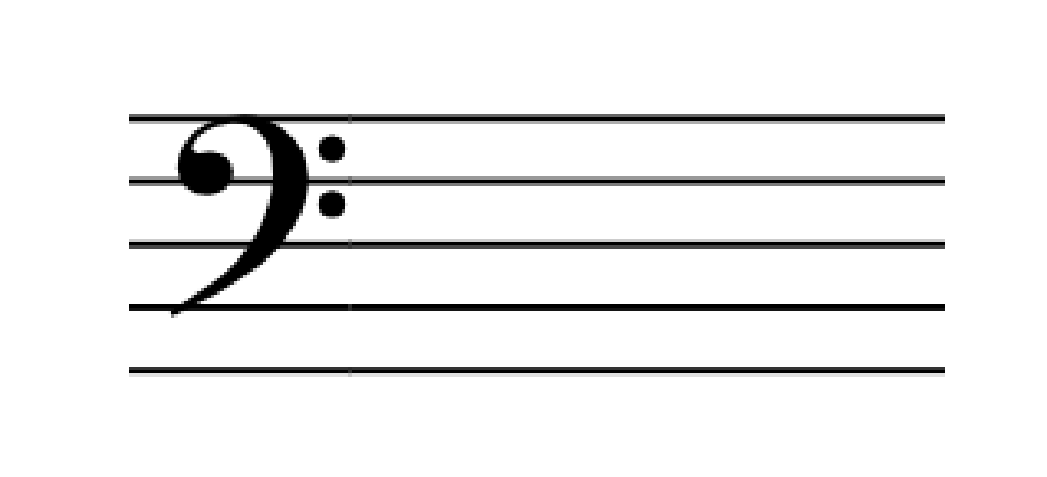
  
\_\_\_\_\_

  
\_\_\_\_\_

15. Write the key signature for each major key:

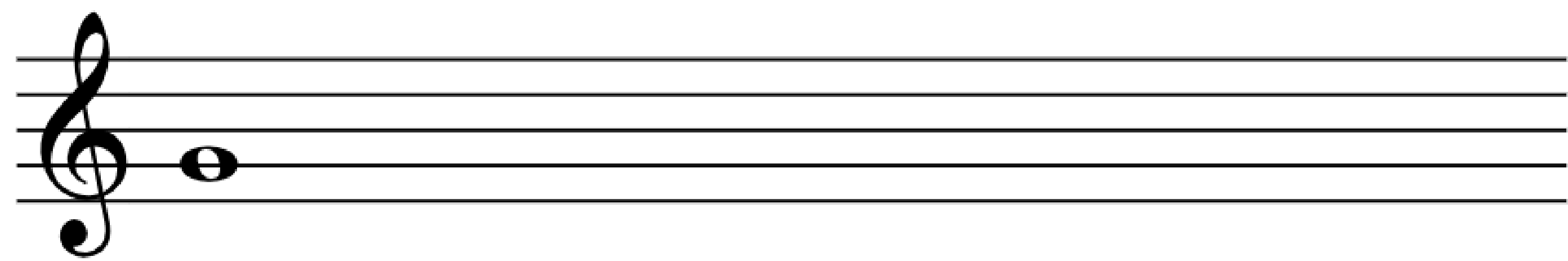
  
D $\flat$  Major

  
F $\sharp$  Major

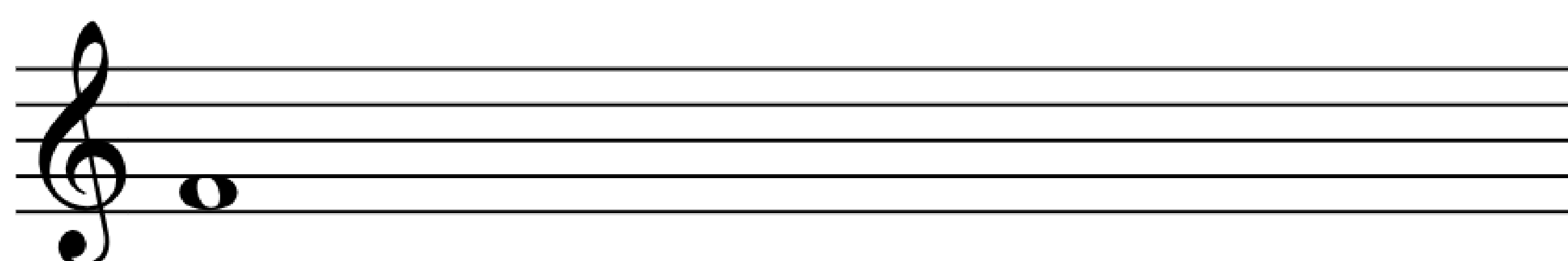
  
E $\flat$  Major

16. Complete each natural, harmonic, or melodic minor scale, starting on the note given:

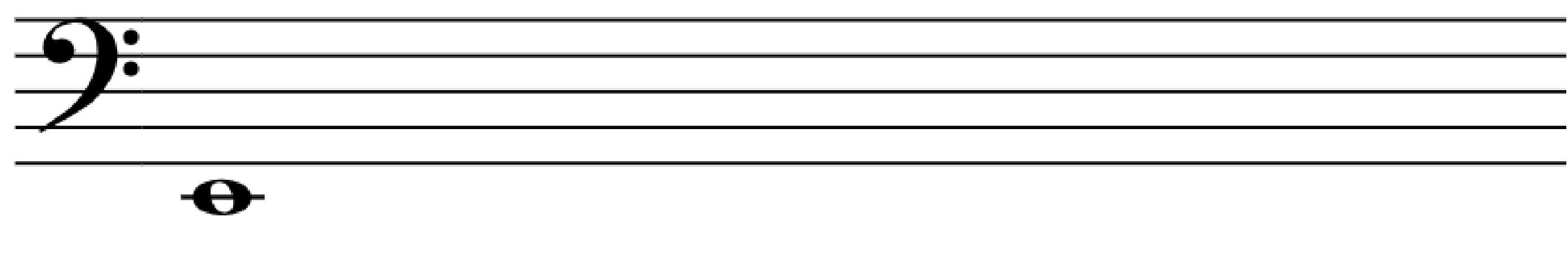
natural minor:



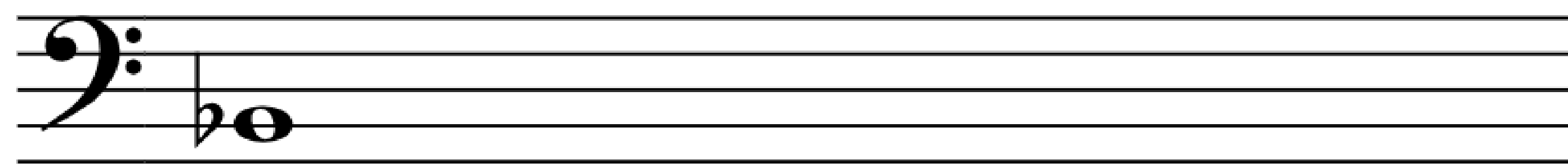
harmonic minor:



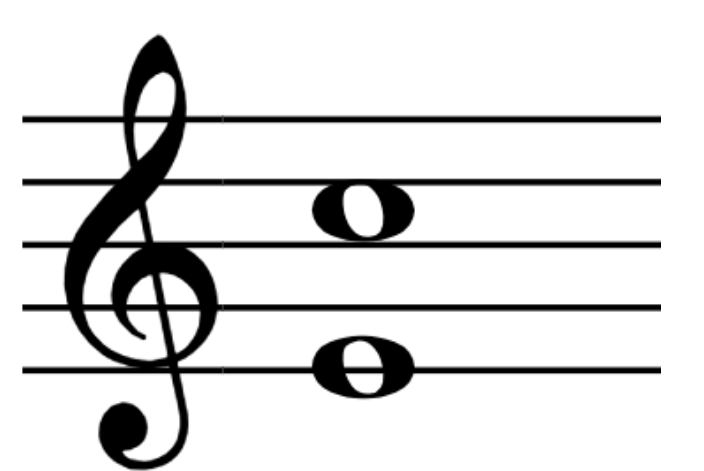
melodic minor:  
(ascending and  
descending)



harmonic minor:



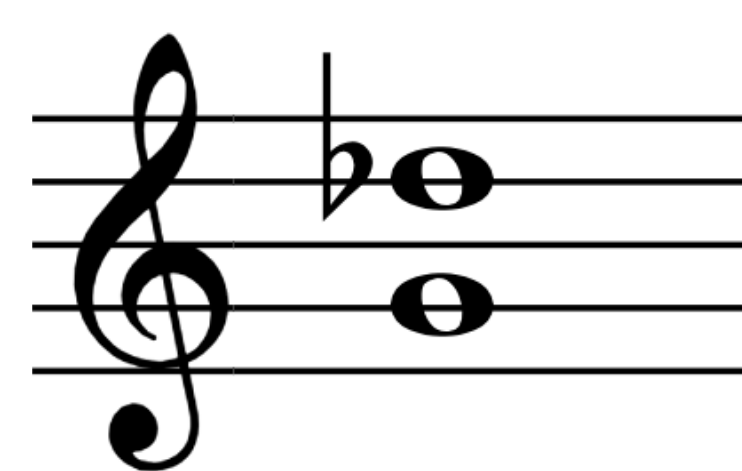
17. Identify each interval's size (2, 3, 4, etc.) and quality (Major (M), minor (m), Perfect (P), Augmented (A), or diminished (d)), e.g., m6, P4, d5, etc.:



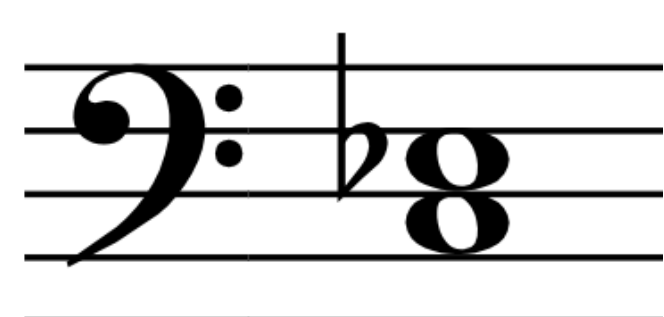
\_\_\_\_\_



\_\_\_\_\_



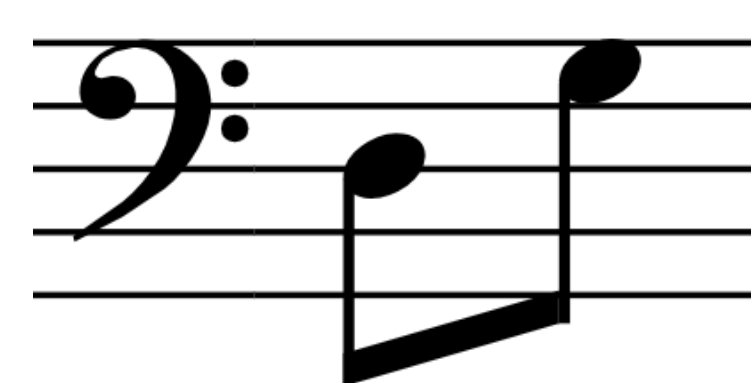
\_\_\_\_\_



\_\_\_\_\_



\_\_\_\_\_



\_\_\_\_\_

18. Write the following intervals above or below the given note as indicated:



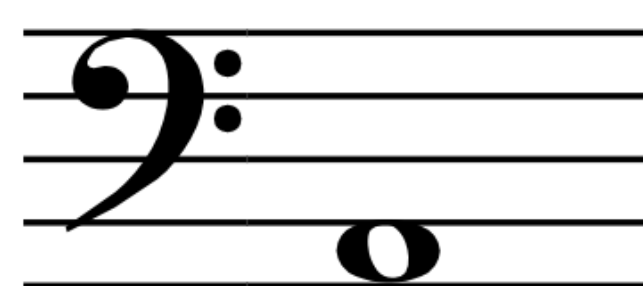
M6 above



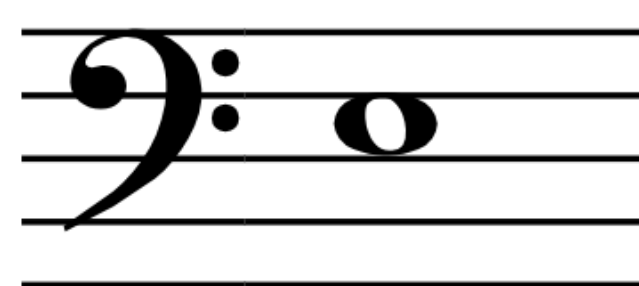
m7 below



A4 above



m2 above



P5 below



M3 below

19. Identify the time signature of the passage below:

Your answer: \_\_\_\_\_



20. Draw in the missing barlines according to the time signature of the passage:

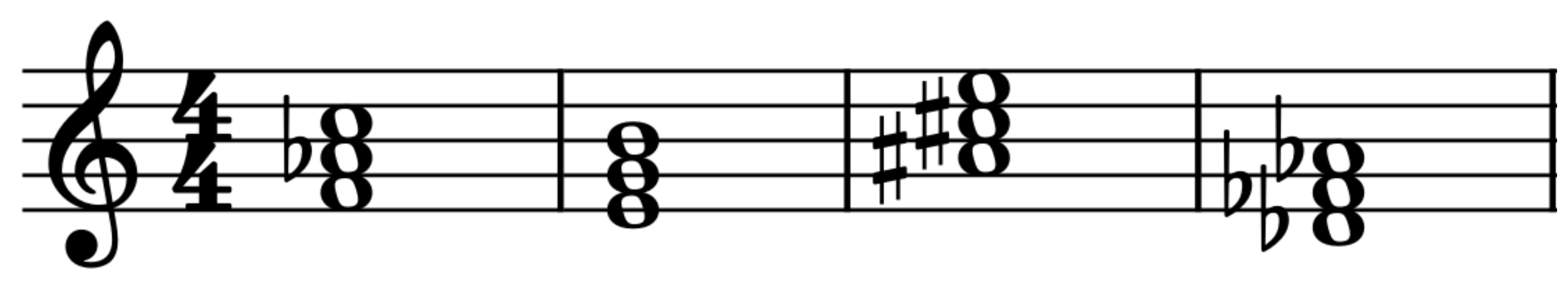


21. Beam the notes below according to dotted quarter beats:

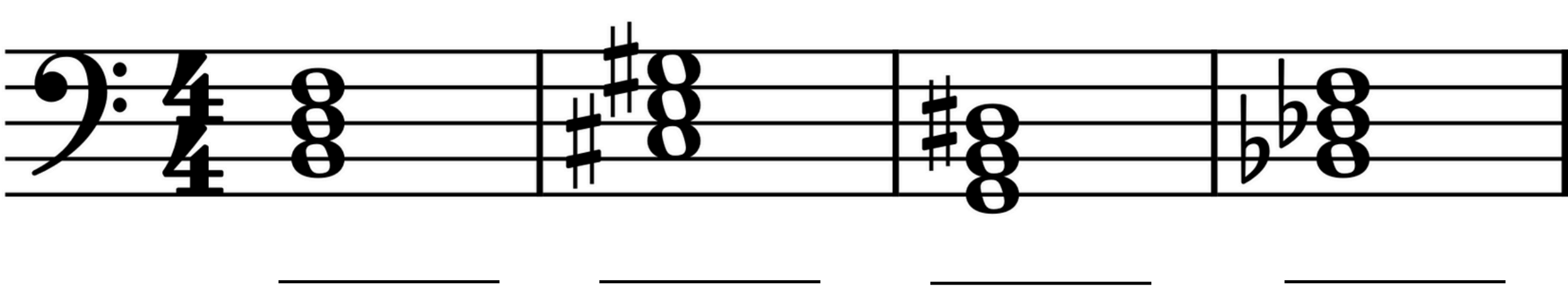




22. Identify the root and quality (M, m, d, A) for each of the following:

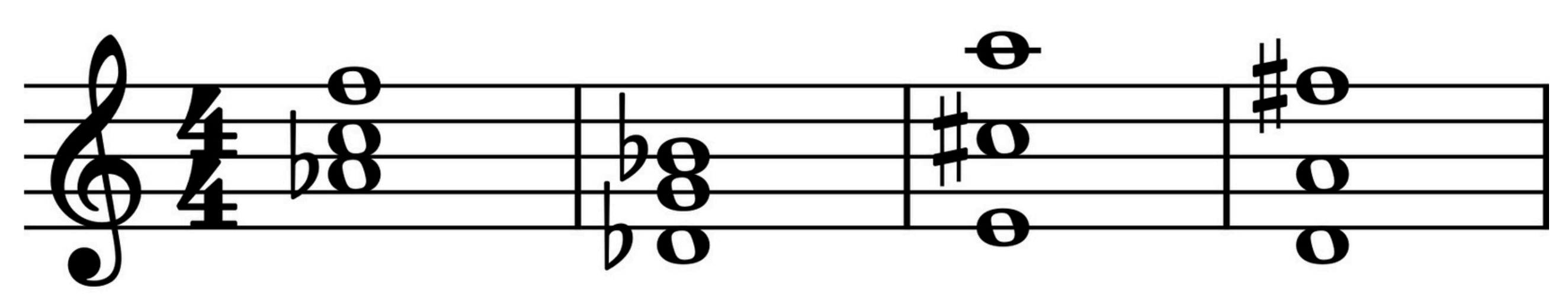


Example: fm      \_\_\_\_\_

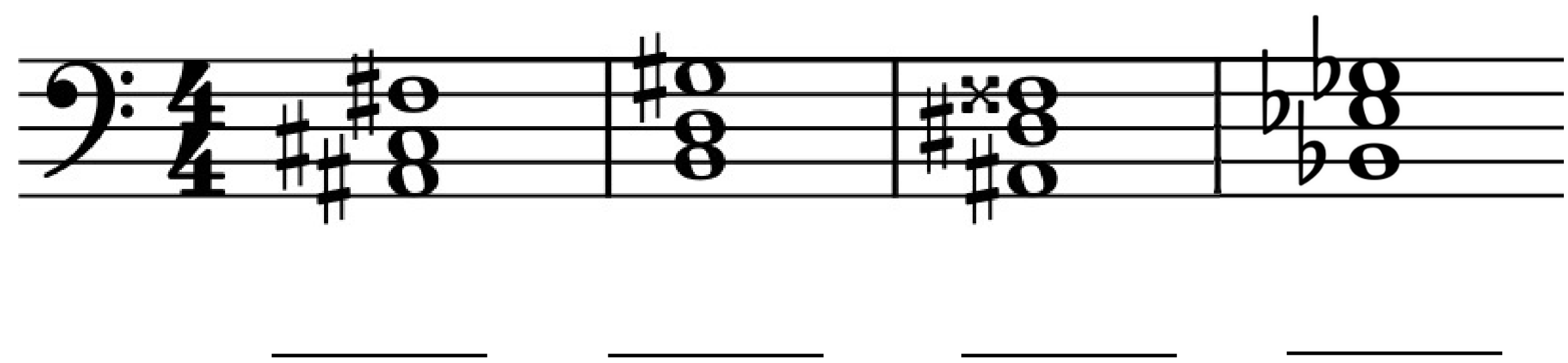


\_\_\_\_\_

23. Identify the root, quality (M, m, d, A), and inversion (root position, 1<sup>st</sup> inv., or 2<sup>nd</sup> inv.) for each of the following:



Example: fm, 1st inv.      \_\_\_\_\_



\_\_\_\_\_

24. Label each chord below on the line beneath the staff with the correct roman numeral in G Major. Use lowercase for minor chords and uppercase for major (eg. V, ii):



\_\_\_\_\_



\_\_\_\_\_



\_\_\_\_\_

24. Identify the key of this exerpt and label each chord with the correct roman numeral:



Key of: \_\_\_\_\_